

**DART Assembly & Operating Instructions**  
Operating Assistance - Tom Bunty (717) 309-5336

**THE DART SYSTEM**



Dart Unit #1 with old screen container

# DART Assembly & Operating Instructions

Operating Assistance - Tom Bunty (717) 309-5336

## I. Introduction

### A. DART System Contents

Three boxes and two additional guns in cloth sleeves are included with the Dart System. The boxes contain the Main Unit (the largest box), the Screen Unit, and a gun case with two guns. Please make sure you have all the components before you begin the assembly.



Dart Unit #1 with the old screen container

### B. General Instructions

While the new DART System Unit is smaller than the previous model, transportation, assembly, and disassembly is still a job for two people.

## **DART Assembly & Operating Instructions**

Operating Assistance - Tom Bunty (717) 309-5336

No tools are required for the assembly but you will need a step ladder if you don't have room to lay the Screen Frame out flat.

Please remember to be gentle with this equipment, it was expensive to purchase and is expensive to fix and must be used by many of your fellow volunteers.

Start the assembly with the Screen Unit followed by the Main Unit. The guns, which don't take any assembly, should be done last.



New Screen Container for both Units

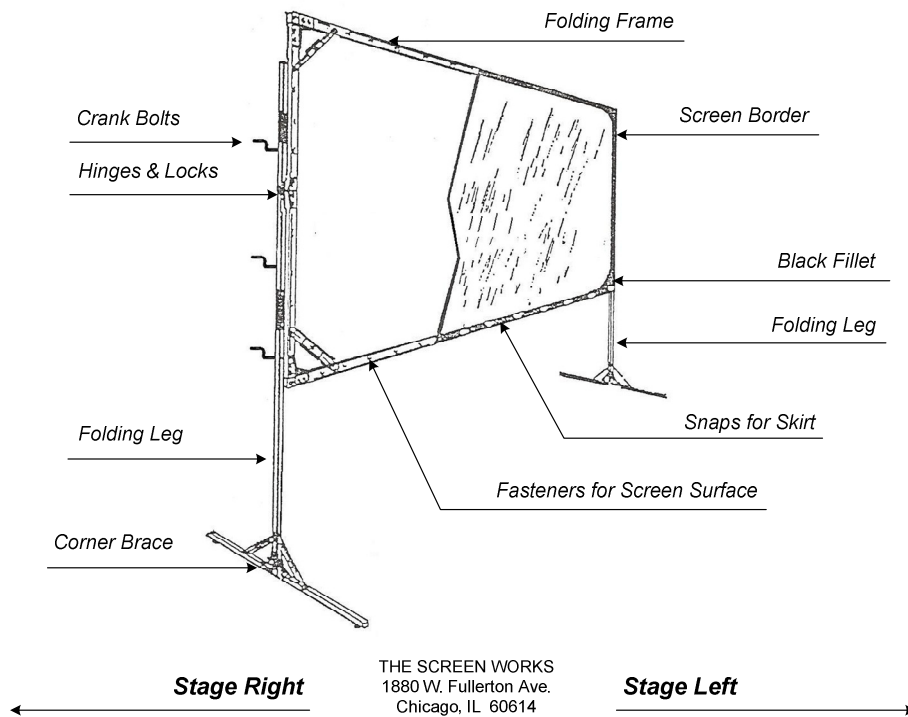
## **II. Screen Assembly Instructions**

### **A. Preparations**

- Before assembling anything you need to figure out where the Screen needs to be located. It's important to account for the fact that the projector in the Main Unit needs to be around 10 – 15 feet in front of the Screen with nothing between the two units. That includes the operator and the participants. If you place the main unit greater than 15 feet from the screen you run the risk that the camera will not be able to see the shots fired from the guns.  
NOTE: A bright, white wall could work well as a screen. You'll need to try it to make sure.
- Another factor that is important to consider when positioning the Unit is light. A strong light source around the Screen will wash out the guns signal and cause the camera to miss them. Either position the screen in front of the light or shade the light source or remove the light bulb. Regardless, beware of strong ambient light.
- Once you figure out where you want the two units, you can begin with assembling the Screen. It takes a lot of room to do that, so it's best to keep the Main Unit far out of the way until the Screen is up.
- Locate the Screen Unit box, move it to the general location you will be placing the Screen and open it.
- Familiarize yourself with the Screen Unit components in the following diagram.

# DART Assembly & Operating Instructions

Operating Assistance - Tom Bunty (717) 309-5336



# DART Assembly & Operating Instructions

Operating Assistance - Tom Bunty (717) 309-5336

## B. Screen Assembly

1. Unpack the Screen Unit Box. You will find the extension cord, the Screen in a soft, black case, the Screen Frame, the left Folding Leg, the right Folding Leg, and a clear, plastic bag with parts. Please note how the bubble wrap is used to protect the various components from damaging each other,



New Screen Unit - Case and Unfolded Frame

2. Take 4 Crank Bolts out of the clear, plastic bag and put the bag back in the Screen Unit Box. You won't need the bag any more.

3. Set the Screen Unit Box out of the way. You won't need it again until you disassemble the unit.

## **DART Assembly & Operating Instructions**

Operating Assistance - Tom Bunty (717) 309-5336

4. Move the Screen in its soft, black case out of the way for the moment.
5. Unfold the two folding legs making sure the corner braces are fully extended and the hinge locks are in place. It doesn't make any difference which leg is right or which one is left.



New Screen Unit Frame

6. Unfold the Screen Frame. Best results have come from unfolding and locking the top and bottom then unfolding and locking the two sides. This sequence is not mandatory but, above all, be gentle when you are unfolding the Frame. Make sure you know which way the hinges open, and lock them in the open position.

## **DART Assembly & Operating Instructions**

Operating Assistance – Tom Bunty (717) 309-5336

7. Position the Screen Frame for screen installation. The absolute best method, if you have the room, is to lay the Screen Frame flat with the snaps facing up. You may need to raise the screen frame up from the floor to protect it from any dust or debris. Just put a chair or a box on each corner to do this.

NOTE: If you don't have the room to lay the frame flat, attach the Screen Frame to the folding legs (see instructions) and snap the Screen to the Frame in the upright position. If you do this you WILL need either Wilt Chamberlain or a small folding ladder.

8. Unzip the black screen bag and remove the Screen. Please note how the Screen is folded. It is very important that it be folded up the same way to prevent damage and allow it to fit smoothly into its bag. Also, please make sure the Screen doesn't drag on a rough or dirty floor. This could damage it.

9. Snap the Screen onto the screen frame. You will notice that one edge of the Screen has a blue cloth tag labeled "Bottom". This is the bottom edge.

10. Attach the Screen Frame to the two folding legs. This definitely a two-man job so get your buddy right now.

a) Get the 4 Crank Bolts. Two of them go on the right, two on the left.



## DART Assembly & Operating Instructions

Operating Assistance – Tom Bunty (717) 309-5336

b) Look at the back of the Screen Frame and you will see several screw-holding devices that stick out from the frame. The Crank Bolts will go through the holes in the folding legs from the rear and screw into these screw-holding devices. Familiarize yourself with how this will work before you pick up the frame.

c) Pick up the Screen Frame with the Screen facing the projector. You will see a blue label on the screen telling you which way that is.

d) Attach the Screen Frame to the front of the two folding legs. Make sure you place the Frame high enough to clear the corner braces at the bottom of the folding legs. You can adjust the height of the Screen in six-inch increments by using a different set of holes in the folding legs.

NOTE: Tighten the Crank Bolts until they are just snug. Over-tightening is NOT a good thing.

e) Congratulations! You have just finished the Screen Unit assembly. It is the most difficult part of the whole procedure. Here is a picture of a fully-assembled Screen Unit.

# DART Assembly & Operating Instructions

Operating Assistance - Tom Bunty (717) 309-5336



New Screen Unit - Fully Assembled

## III. Main Unit Assembly Instructions

1. Position the unit. Get the Main Unit from where you stashed it and place it in front of and about 10 feet away from the Screen. Be sure the side marked "front" faces the screen.
2. Remove the front and rear covers of the Main Unit by loosening the clamps that hold them on. Please note that the new Dart Unit's (Unit #2) front cover has foam removed on the bottom-inside of the cover to leave room for the wiring (see picture below). It is very important that you put this back properly on the front of the Main Unit when you disassembled it.

## **DART Assembly & Operating Instructions**

Operating Assistance - Tom Bunty (717) 309-5336

3. Set the covers off in a safe place. You won't need them again until you close up for the night.



Dart Unit #2 - Front Cover

4. Look in the bottom shelf of the front side of the Main Unit and locate the connectors that attach to the computer that runs the unit. (The picture below shows the Main Unit from the front). Make sure all connectors are firmly in their positions.

5. Remove the Projector Remote Control from the top shelf of the front of the Main Unit.

6. Remove the lens cap from the Projector and store it in a safe place.

## DART Assembly & Operating Instructions

Operating Assistance - Tom Bunty (717) 309-5336



Dart Unit #1 - Front View

7. Remove the mouse and keyboard from the bubble wrap on the rear side of the Main Unit. Set the bubble wrap in a safe place. You will need it when you disassemble the unit. Below is a picture of the rear of the Main Unit.

# DART Assembly & Operating Instructions

Operating Assistance - Tom Bunty (717) 309-5336



Dart Unit #1 - Rear View



Dart Unit #2 - Rear View

## **DART Assembly & Operating Instructions**

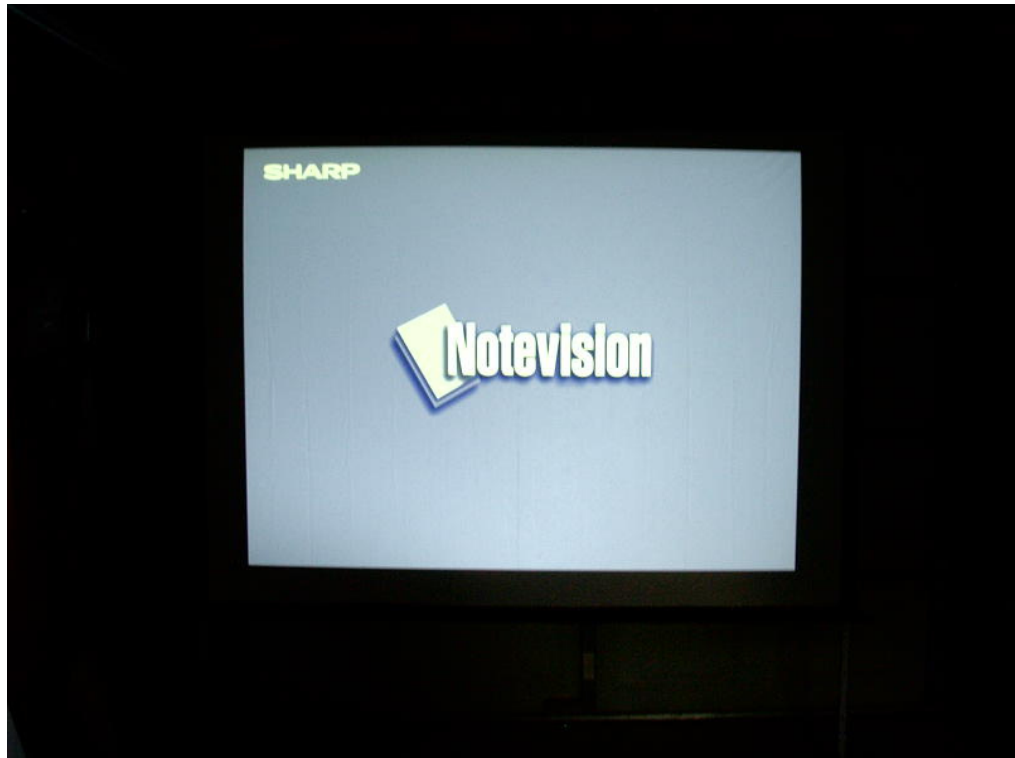
Operating Assistance - Tom Bunty (717) 309-5336

8. Plug in the Main Unit using the power cord in the front of the unit. Use the heavy-duty extension cord from the Screen Unit Box if necessary.
9. Turn on the main unit by activating the toggle switch located on the right side of the Power Unit which is on the left-hand side of the middle shelf in the rear of the unit.
10. Turn on the projector using the Projector Remote Control and make sure that the input device is Input1.
11. Turn on the computer by pushing the button you see on the computer box which is on the bottom shelf facing the rear of the Main Unit.
12. Unpack the guns.
13. You are now ready to turn on the DART Computer.

## **IV. Operating the DART Program**

### **A. Starting up the System**

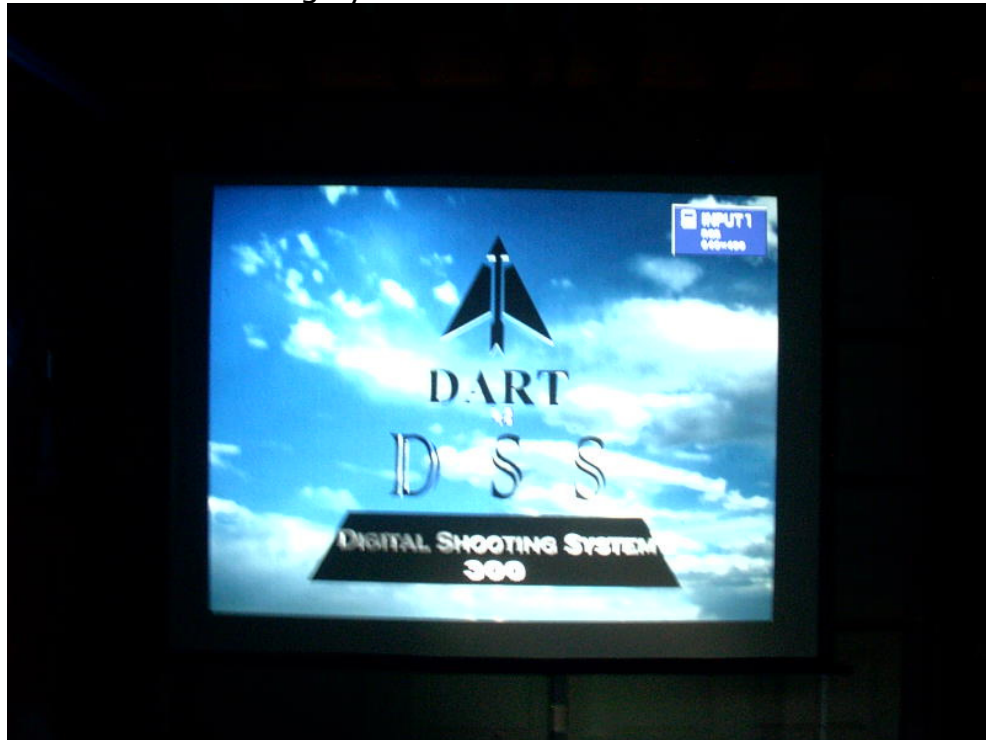
1. Turn on the DART computer by pushing the button on the front of the computer. The computer is on the bottom shelf and the front of the computer faces the rear of the DART case.
2. The first image you should see displayed is:



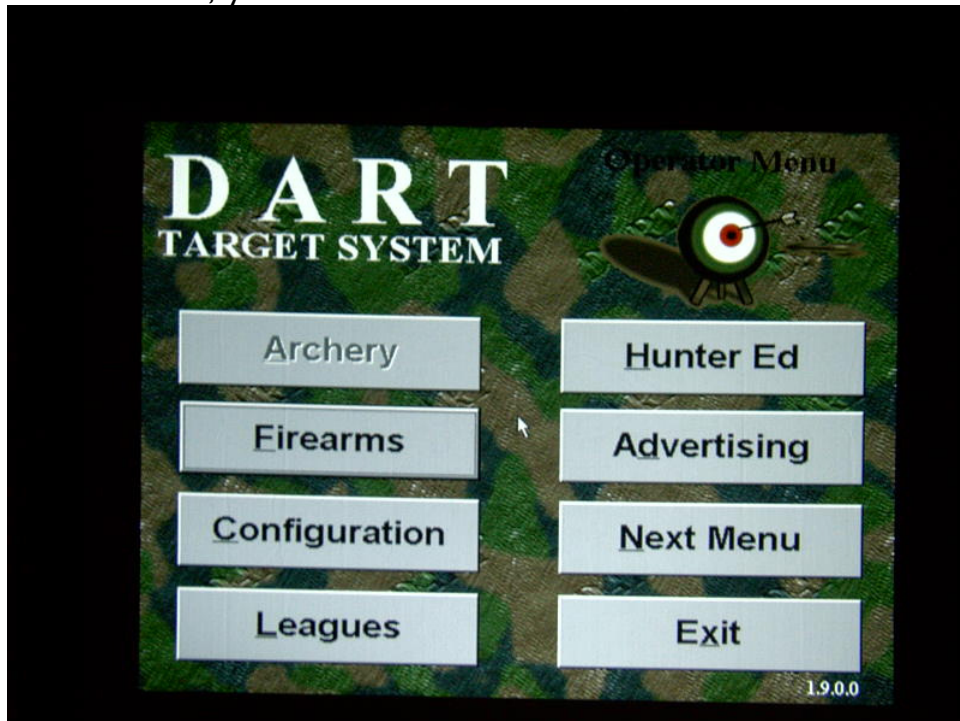
# DART Assembly & Operating Instructions

Operating Assistance - Tom Bunty (717) 309-5336

3. The second image you should see is:



4. System will pause at this screen for awhile, but in order to move forward YOU need to click the mouse anywhere on the screen. Then, you'll see:

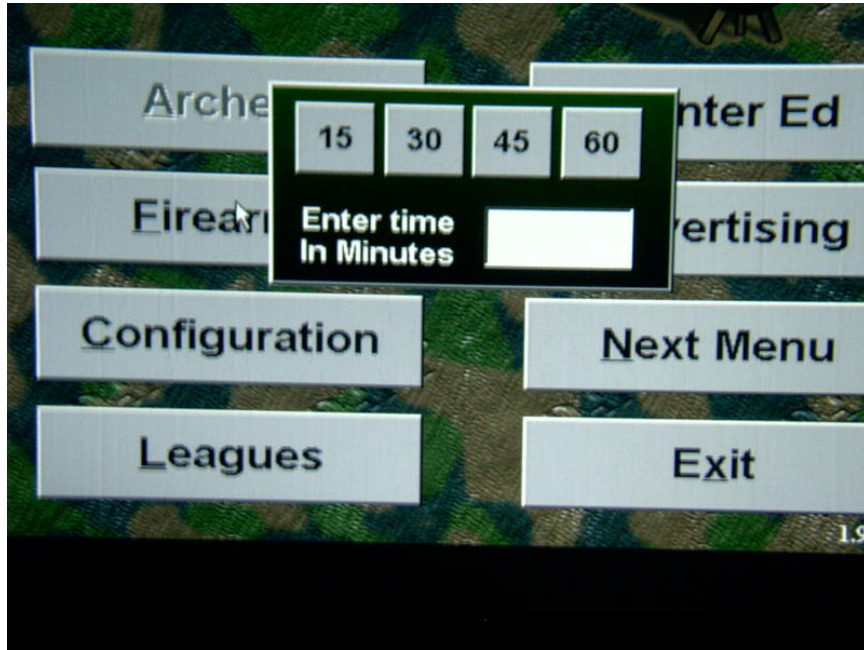




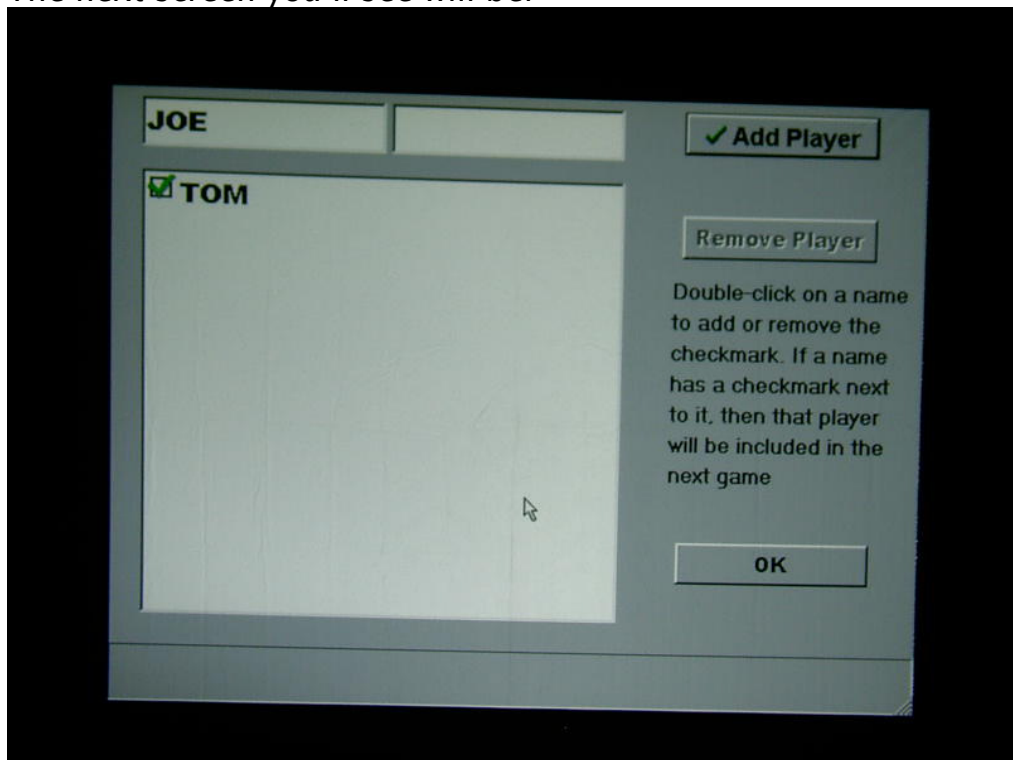
## DART Assembly & Operating Instructions

Operating Assistance - Tom Bunty (717) 309-5336

5. Click FIREARMS with the mouse. The next screen will be:



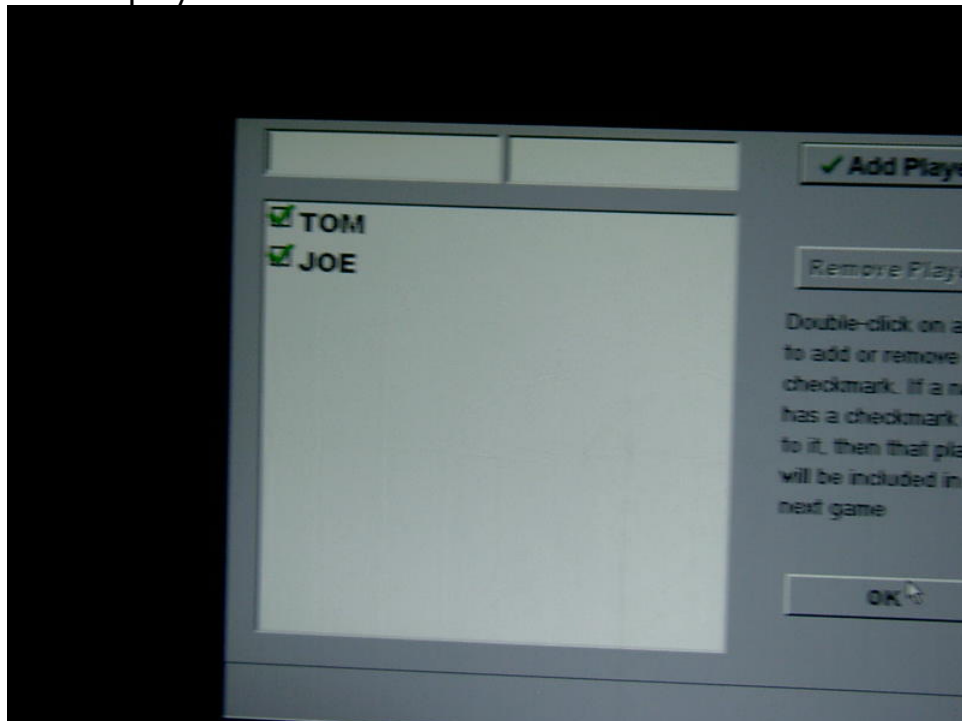
6. Select one of the options or enter any amount (ie: 999).  
The next screen you'll see will be:



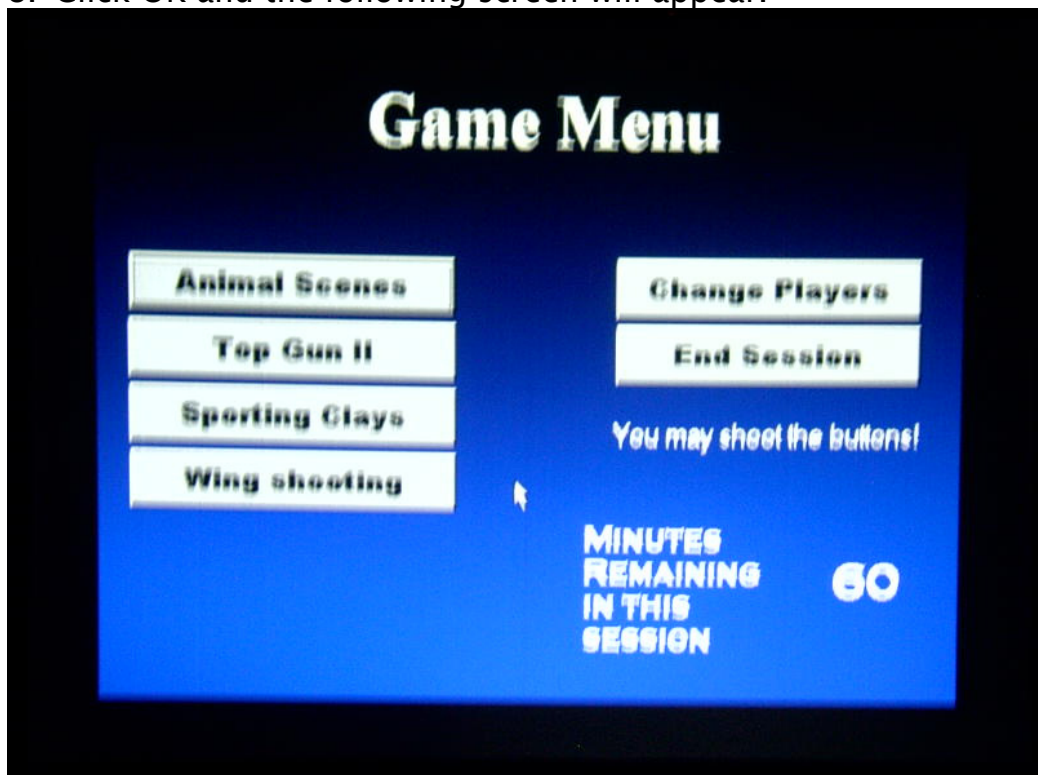
## DART Assembly & Operating Instructions

Operating Assistance - Tom Bunty (717) 309-5336

7. Add players.



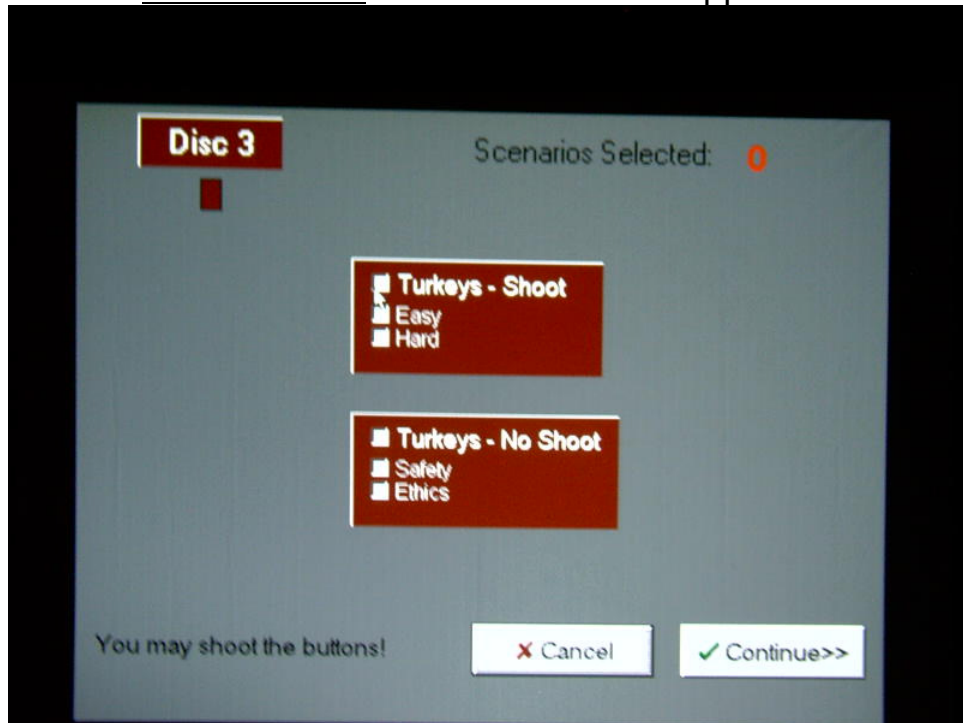
8. Click OK and the following screen will appear.



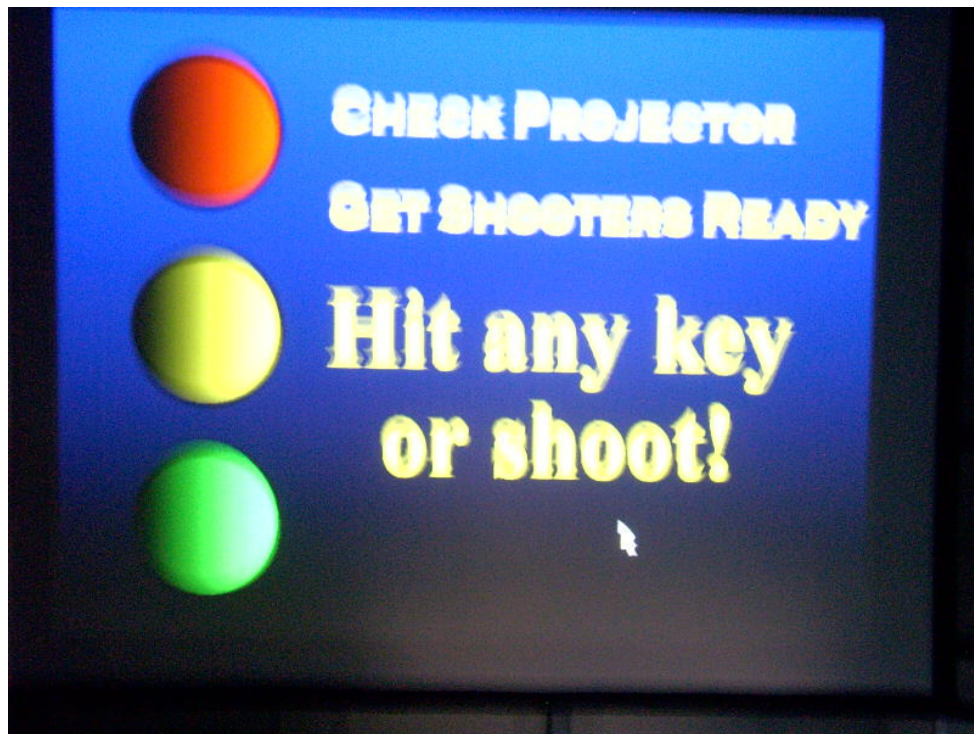
## DART Assembly & Operating Instructions

Operating Assistance - Tom Bunty (717) 309-5336

9. Click Animal Scenes and this screen will appear.



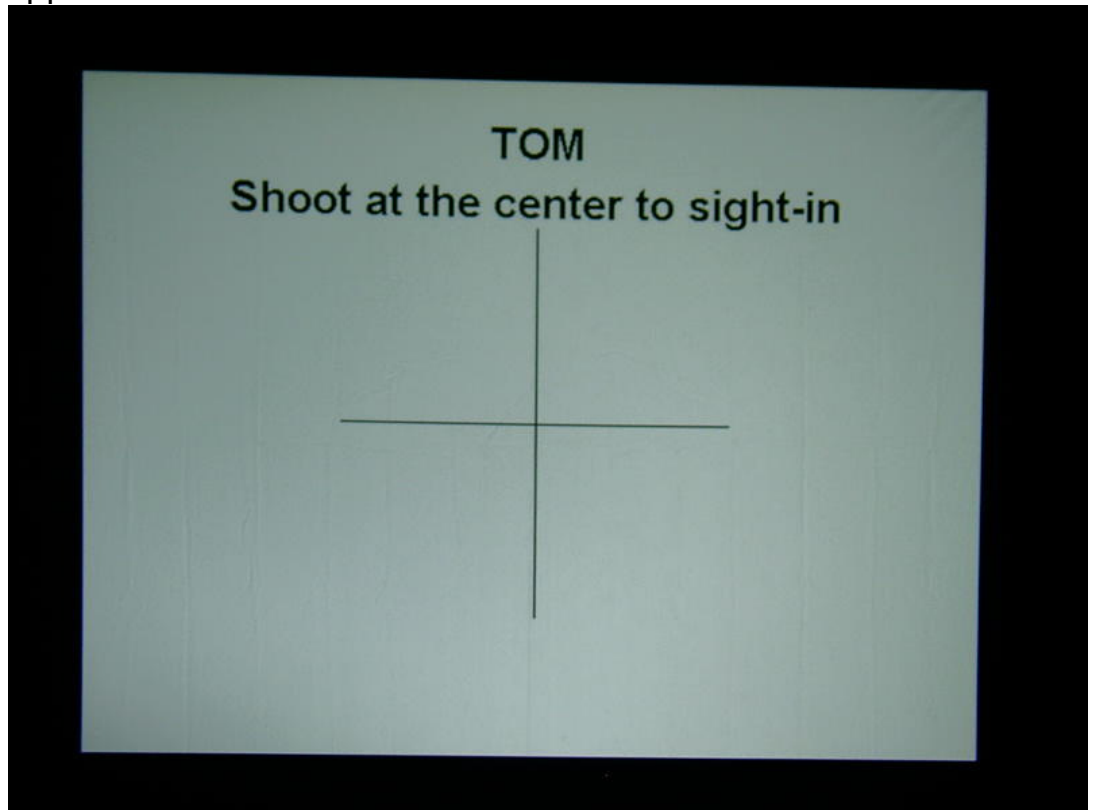
10. Select as many scenarios as you want and Click Continue. The following screen will appear.



## **DART Assembly & Operating Instructions**

Operating Assistance - Tom Bunty (717) 309-5336

11. Hit any key on the Keyboard or shoot one of the guns at the screen and then watch the advertisement video. The following screen will appear.



## DART Assembly & Operating Instructions

Operating Assistance - Tom Bunty (717) 309-5336

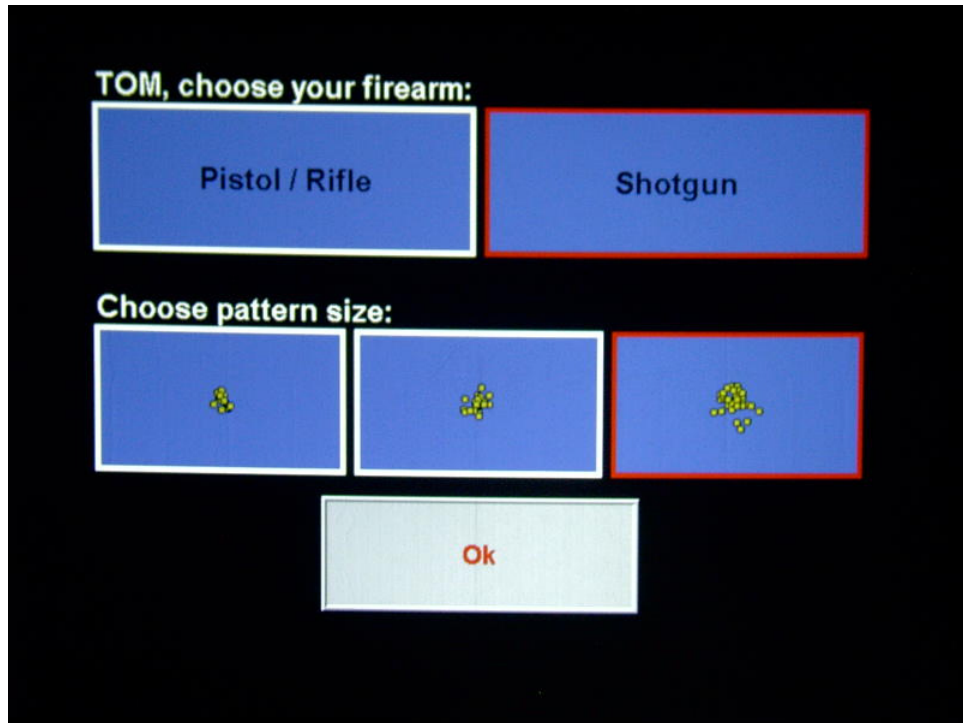
12. Follow the instructions on the screen and site in each gun for each player you set up earlier. This screen will follow:



## DART Assembly & Operating Instructions

Operating Assistance - Tom Bunty (717) 309-5336

13. Take your practice shots and this screen will follow.



14. Click or Shoot SHOTGUN and Click or Shoot the large pattern on the right. Click or Shoot OK.

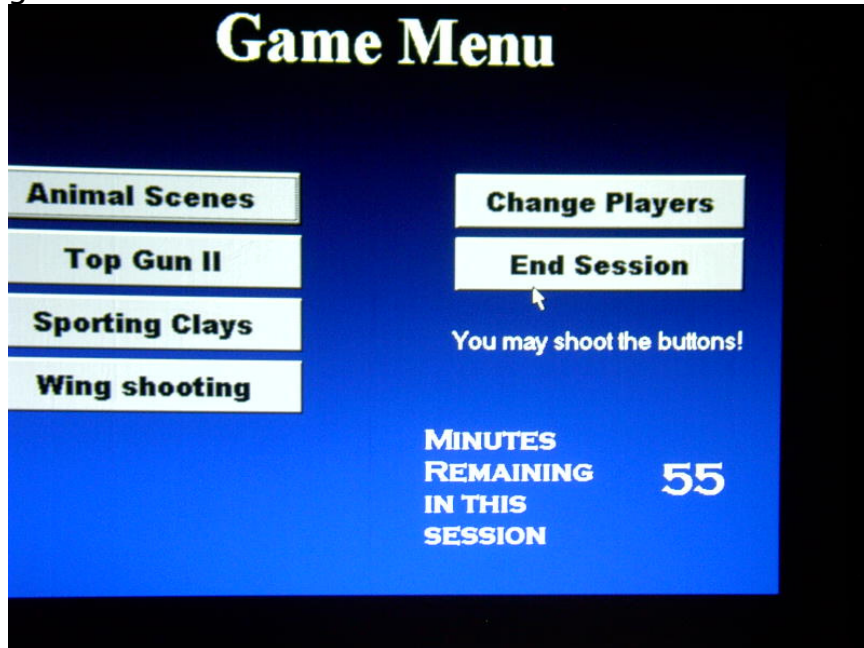
15. The System is now configured. Occasionally it will hang up and you'll need to restart it to continue

# DART Assembly & Operating Instructions

Operating Assistance - Tom Bunty (717) 309-5336

## B. Shutting the system down.

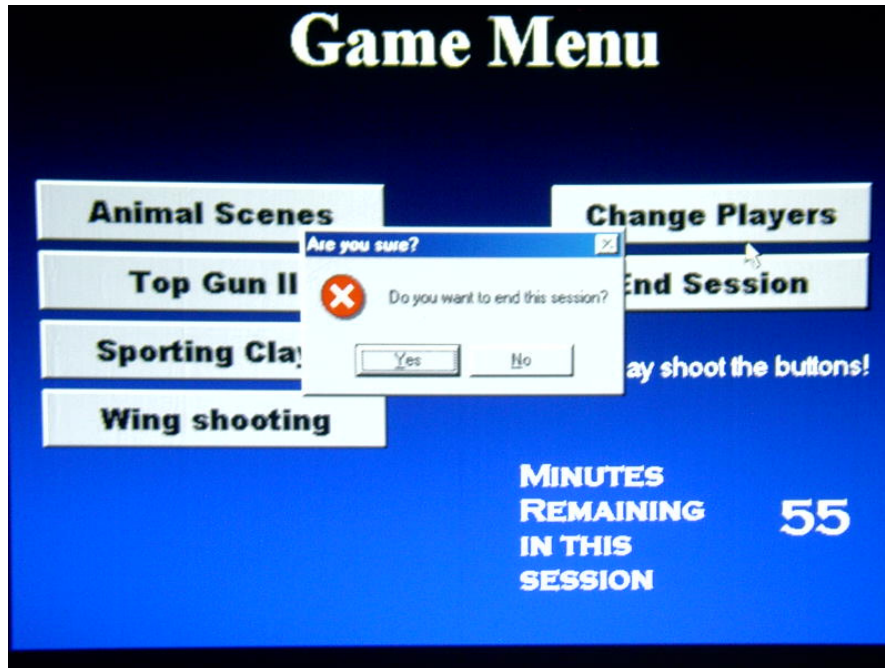
1. When you wish to shut it down, Hit the ESCAPE key on the keyboard (whenever the RED DART screen isn't up) and you'll get to this screen:



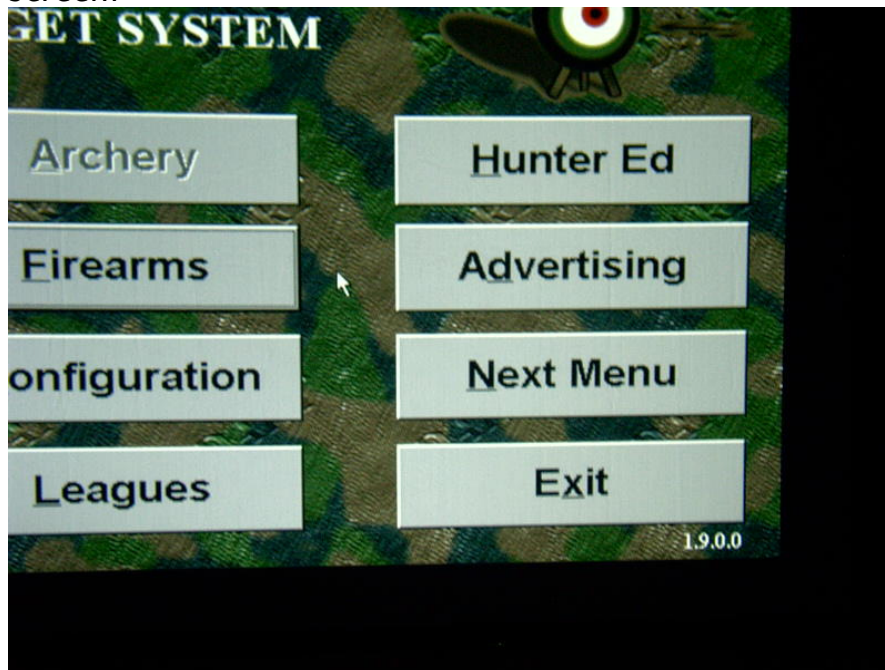
# DART Assembly & Operating Instructions

Operating Assistance - Tom Bunty (717) 309-5336

2. Click End Session and you will see this screen:



3. Click Yes to get the following screen:

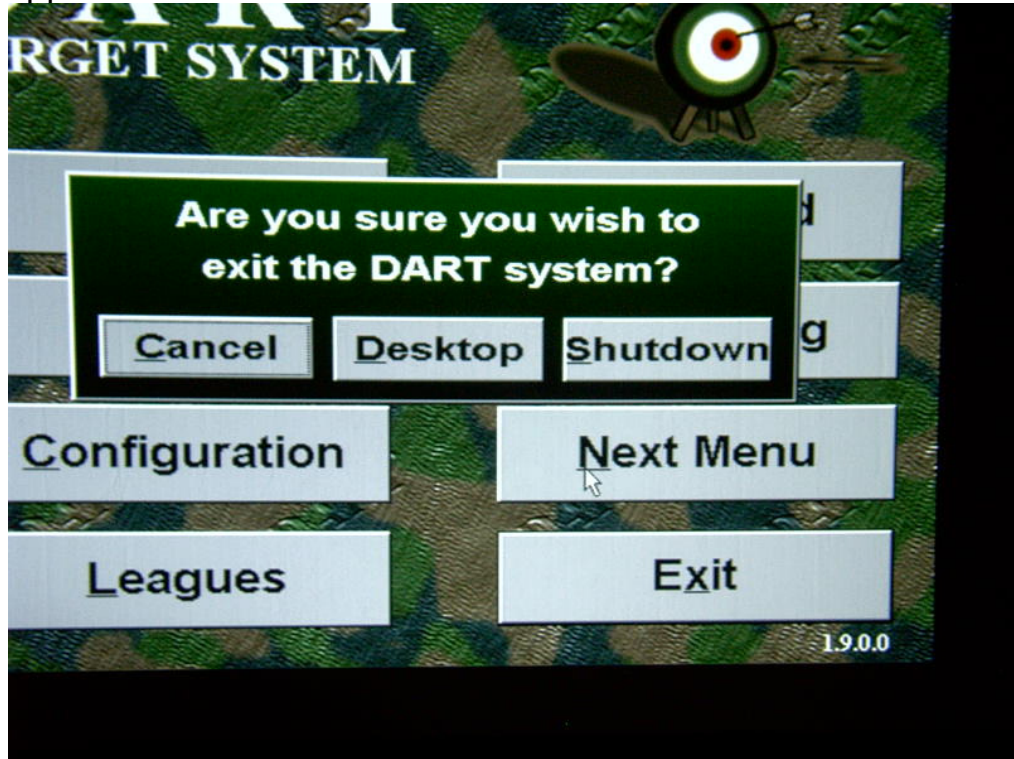




## DART Assembly & Operating Instructions

Operating Assistance - Tom Bunty (717) 309-5336

4. Click Exit and this screen will appear:



5. Click SHUTDOWN to close the system down.

# DART Assembly & Operating Instructions

Operating Assistance – Tom Bunty (717) 309-5336

## V. Disassembling the DART Unit

1. In general, just reverse the Assembly steps to disassemble the DART Unit. Here are the highlights.
2. Exit the DART shooting scenarios and select Shutdown as your final choice.
3. Turn off the Projector using the Projector Remote Control. You will have to click it twice to shut it off rather than go on Standby.
4. Once the computer has cycled down, turn off the Power Toggle Switch and unplug the Unit from the Power Source.
5. Put the guns back in the case/sleeves.
6. Put the Remote Control back on the Top Shelf of the Main Unit (make sure the Velcro sticks). Put the mouse and keyboard back in the bubble wrap and place them in the rear of the Main Unit.
7. Put the Lens Cap back on the Projector.
8. Put the Front and Rear doors on the Main Unit. Please remember to put the front door of Unit #2 (with the foam cut out on the bottom) back on the front of the unit properly.
9. Unfasten the Screen Frame from the two folding legs making sure to place the Crank Bolts back in the Parts Bag.
10. Fold up the Screen and place it in its black, protective bag. Folding the screen is the tricky part. You need to be careful to fold it along the existing crease lines. In general, you will fold it in halves until it is about 5 inches wide and

## **DART Assembly & Operating Instructions**

Operating Assistance - Tom Bunty (717) 309-5336

then fold it lengthwise in quarters. I does NOT fold up like an accordion. The best results are achieved by finding the middle crease and holding that while folding the screen rather than holding the edges as you fold.

NOTE: Once again make sure you keep the screen of a dirty or rough floor.

11. Unlock all the hinges on the Screen Frame as well as the corner braces.
12. Fold the Screen Frame up. BE GENTLE! Folding up the sides first and then the top and bottom seems to work best.
13. Unlock all the hinges and the corner braces on the two Folding Legs and fold both units up.
14. Place the Screen Frame, the two Folding Legs, the Parts Bag, the Screen Bag, and the extension cord (in that order) in the Screen Unit box separating each item with bubble wrap to protect them.
15. You're Done!